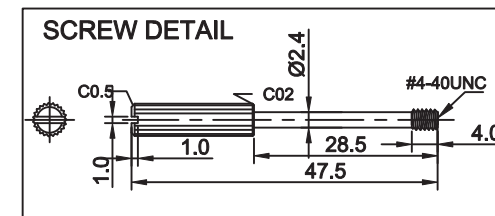
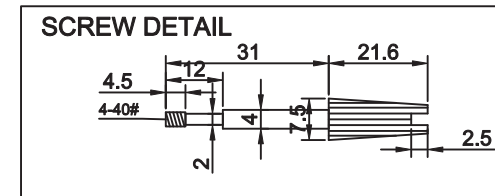
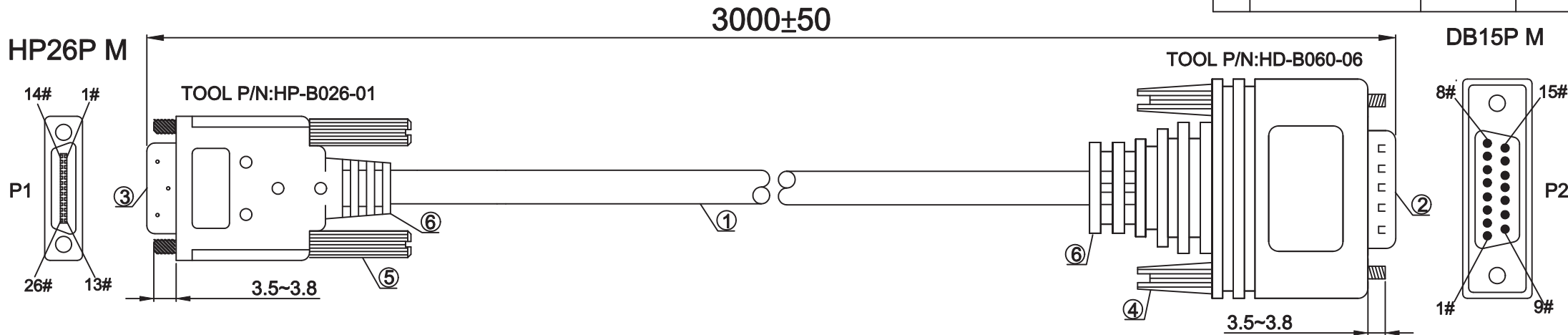
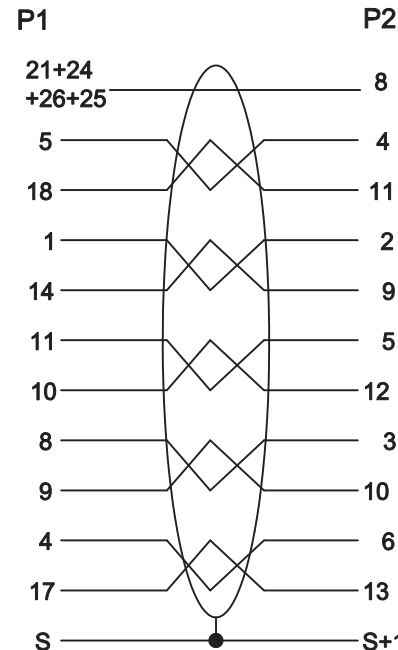


RoHS COMPLIANT

DESCRIPTION CONTROL			
REV	DESC	DATE	APP
A	FIRST RELEASE	2009/03/31	



PIN ASSIGNMENT



ITEM	QTY	PART NUMBER	DESCRIPTION
6		G0010	ALL CONNECTOR MOLD HOODS BLUE PVC.
5	2	C0035	SCREW:#4-40UNC 5*47.5MM NICKEL PLATED.
4	2	C0036	SCREW:#4-40UNC E31.0 BLUE ABS.
3	1	A0140	HP26 MALE WHITE INSULATOR,SOLDER TYPE.
2	1	A0011	DB15 MALE BLACK INSULATOR,SOLDER TYPE.
1	1	E0410	28AWG/6P+ADB OD:6.5MM,JACKET:BLUE CL2+CSA.

NOTES:

1. PIN ASSIGNMENT SEE TO WIRE LIST.
2. ELECTRICAL TEST CONDITION:
 - (a).100%OPEN,SHORT & MISWIRE TEST,
 - (b). INSULATOR RESISTANCE:20 Mohm MIN.
DC 300V 0.01sec.
 - (c). CONTACT RESISTANCE:3 ohm MAX.

Seconn International Enterprise Co., Ltd.			
	REV.	DB15P Male to HP26P Male cable	
	A		
DRAW,BY:		P/N: SE-S-DB15HP26	
CHECK,BY:		SCALE	UNIT SHEET
APP,BY:		FREE	mm 1/1